



Architectural Details:

Cladishield (Rainscreen) Installation System With
Anchor Plate for eFacade PRO

⚡ eFacade PRO & Cladishield Rainscreen System

With CladiShield Rainscreen system, you don't just get cladding panels—you get a complete wall solution. Provided by Mitrex's sister company, Cladify, the system is a comprehensive package that includes a high-performing air and moisture barrier, continuous insulation, adjustable sub-framing systems, and, of course, our exceptional multi-facing cladding.

01 Rainscreen system

- An air pressure equalized cavity wall system
- Air and water tight & allows ventilation
- Continuous insulation & air vapour barrier

02 Improved installation

- Precise installation & irregular design capabilities
- Faster installation with pre-assembled units

03 Versatile assembly

- Stick built or pre-assembled capabilities
- Floor to floor panels

04 High-performing envelope

- Unlimited R-value
- Thermal & acoustic insulation

05 Code compliant

- 3rd party tested and code compliant system
- Fire testing including NFPA 285, S134, EN 13501, and more



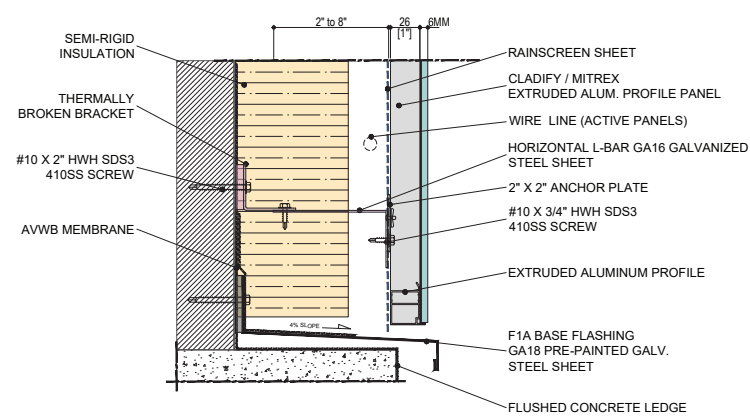
Mitrex eFacade Products Comparison

Mitrex offers three distinct solar cladding solutions—eFacade LITE, eFacade PRO, and eFacade PRO+—each engineered to meet varying project needs in terms of design flexibility, performance, and scale.

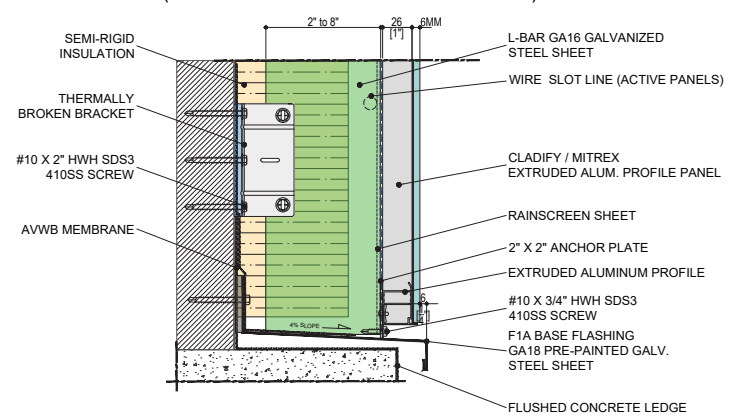
The table below provides a detailed comparison across key features such as colors and finishes, sizing options, weight, system compatibility, and testing standards. Whether you're prioritizing affordability, customization, or advanced performance, this side-by-side overview will help you identify the best fit for your project.

	eFacade LITE	eFacade PRO	eFacade PRO+
Colors & Patterns	5 color options	48 color options	Unlimited customizable colors & patterns
	Finish: Satin glass Thickness: 0.24in (6mm)	Finish: Satin glass Thickness: 0.24in (6mm)	Finish: Super satin, satin, matte, glossy, wood grain, aqualite, and more. Thickness: 0.12-0.47in (3.2-12mm)
Sizes & Weight	2 size options: 73 × 36 in (1854 × 922 mm) 73 × 18 in (1854 × 456 mm)	Custom sizes up to 80 × 39 in (2034 × 994mm).	Customizable single piece sizes up to 125 × 80 in (3175 × 2032mm). Preassembled pieces up to 420 inches (10.7m) long.
	Weight: 3.87 lb/SQFT (18.9 kg/sqm)	Weight: 3.84 lb/SQFT (18.8 kg/sqm)	Weight: 3.1 - 4.7 lb/SQFT (15.4-23.1 kg/sqm)
	Backing: Extruded aluminum profile with panel thickness of 1.3in (34mm)	Backing: Extruded aluminum profile with panel thickness of 1.3in (34mm)	Backing: Extruded aluminum profile with panel thickness of 1.3in (34mm). Aluminum honeycomb with 1 or 2 in (25 or 50mm) thickness excluding facing.
	Shapes: rectangle	Shapes: rectangle	Customizable Shapes: rectangle, triangle, circle, and more
	Ventilated rainscreen system, eFacade LITE system	Ventilated rainscreen system (interlocking channel or anchor plate)	Customizable rainscreen, unitized or prefabricated system options
Systems	System Thickness: 3.78 in (96mm)	System Thickness: 1.5 in (39mm) - 2.32 (59mm)	System Thickness: 1.42 in (36mm) - 4.33in (110mm)
	MOQ of 150 SQFT (13.9 sqm)	MOQ of 500 SQFT (46.4 sqm)	MOQ of 5,000 SQFT (464.5 sqm)
	3rd party tested	3rd party tested	3rd party tested
Testing	Code-compliant & safety tested	Code-compliant & safety tested	Code-compliant & safety tested
	Fire tested	Fire tested	Fire tested

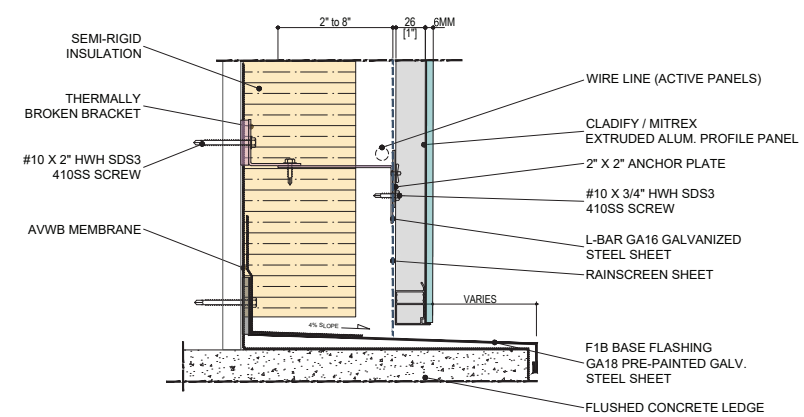
PANEL BASE DETAIL



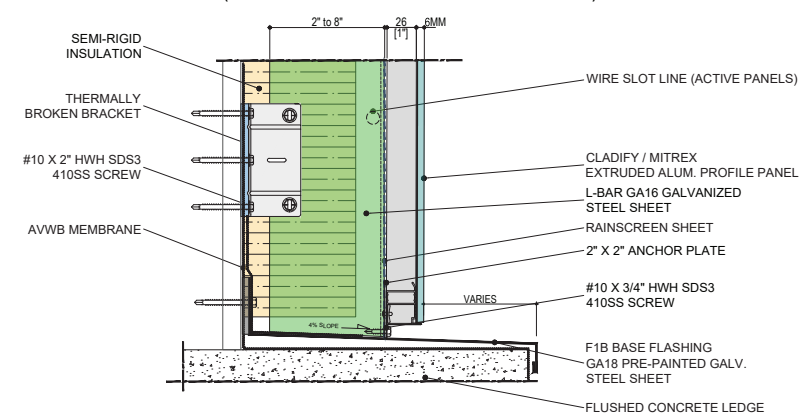
EXPOSED PANEL
(ANCHOR PLATE - SIDE CONNECTION)



EXPOSED PANEL
(ANCHOR PLATE - TOP AND BOTTOM CONNECTION)



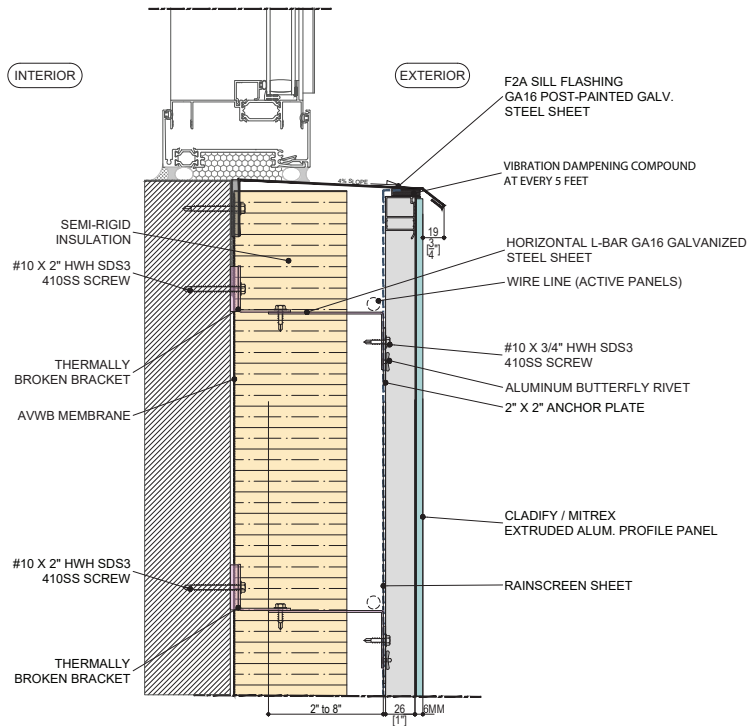
RECESSED PANEL
(ANCHOR PLATE - SIDE CONNECTION)



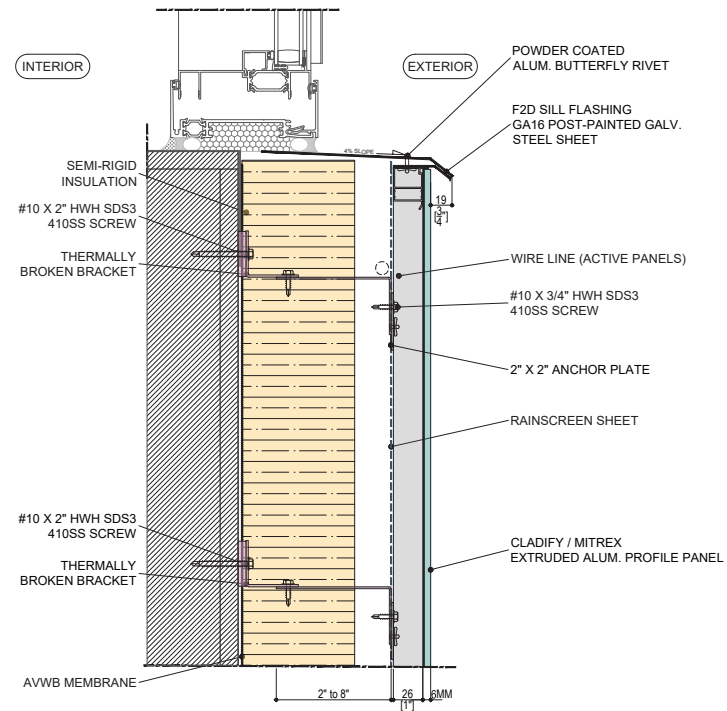
RECESSED PANEL
(ANCHOR PLATE - TOP AND BOTTOM CONNECTION)

WINDOW SILL DETAIL

B-1

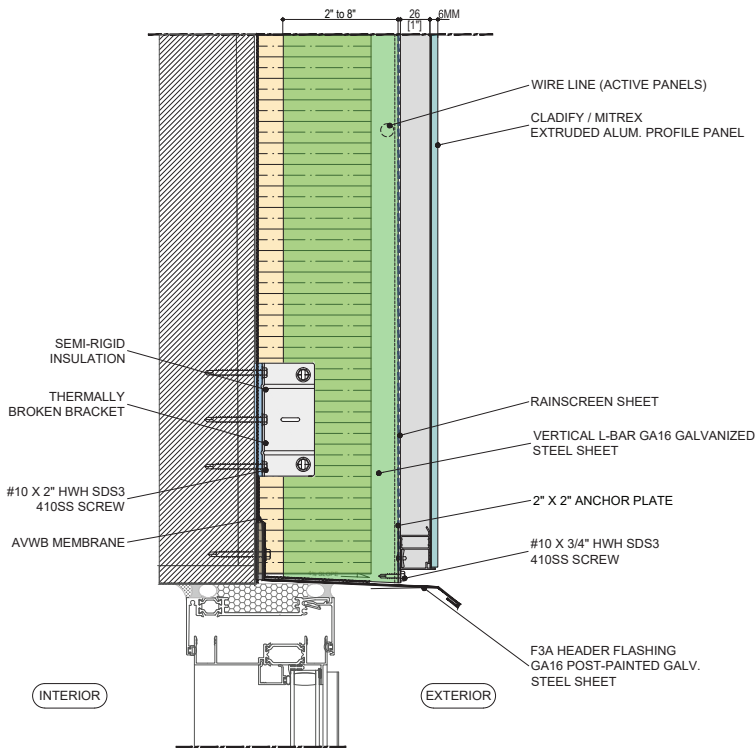


METAL FLASHING
(ANCHOR PLATE - SIDE CONNECTION)

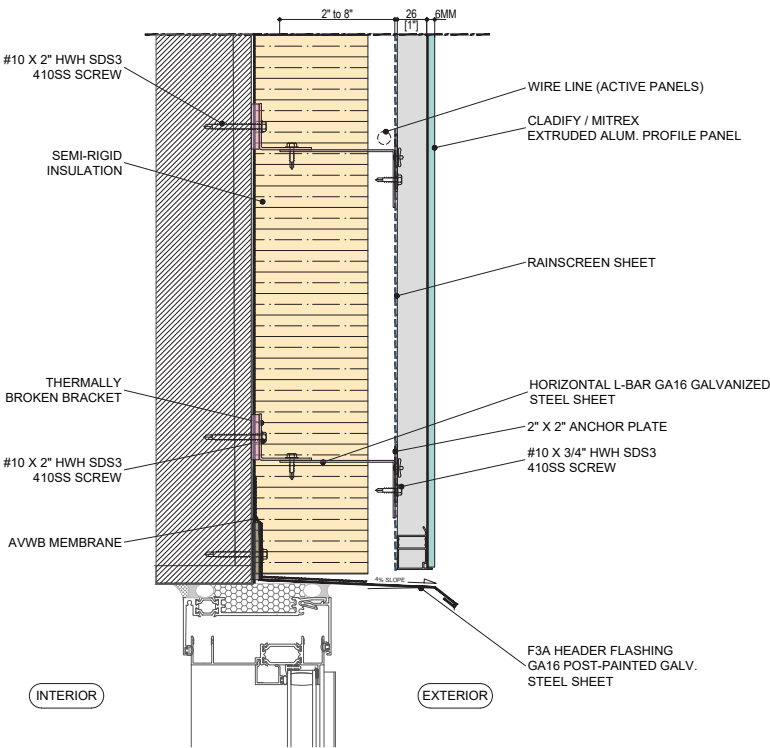


WINDOW HEADER DETAIL

C-1

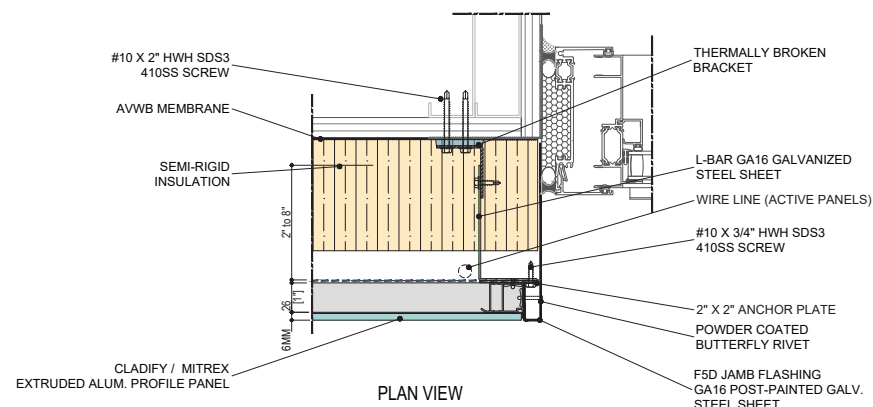


METAL FLASHING
(ANCHOR PLATE - TOP AND BOTTOM CONNECTION)

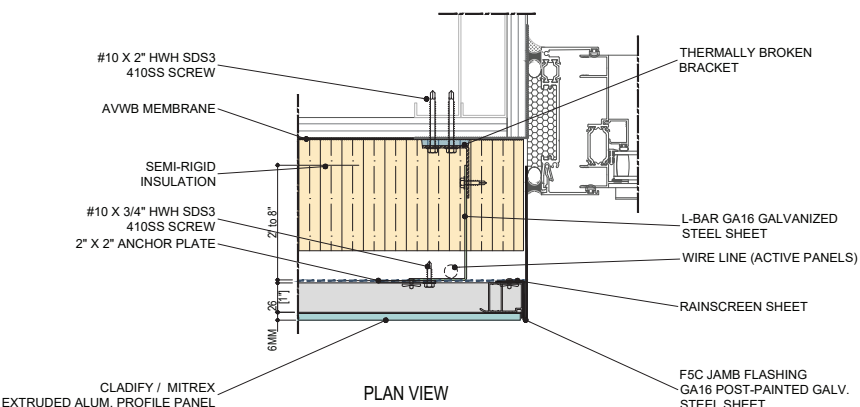


METAL FLASHING
(ANCHOR PLATE - SIDE CONNECTION)

WINDOW JAMB DETAIL



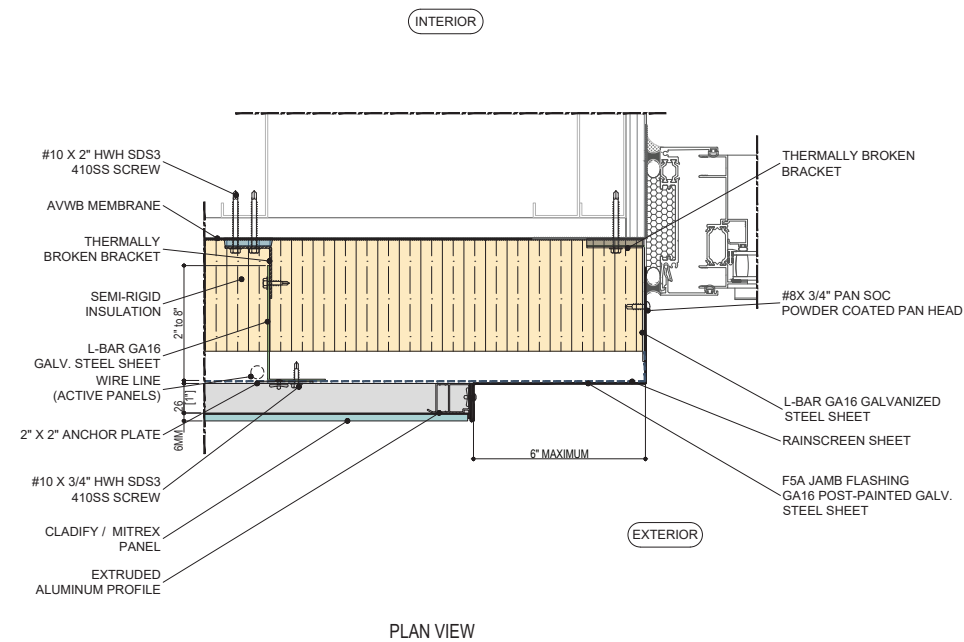
METAL FLASHING
(ANCHOR PLATE - SIDE CONNECTION)



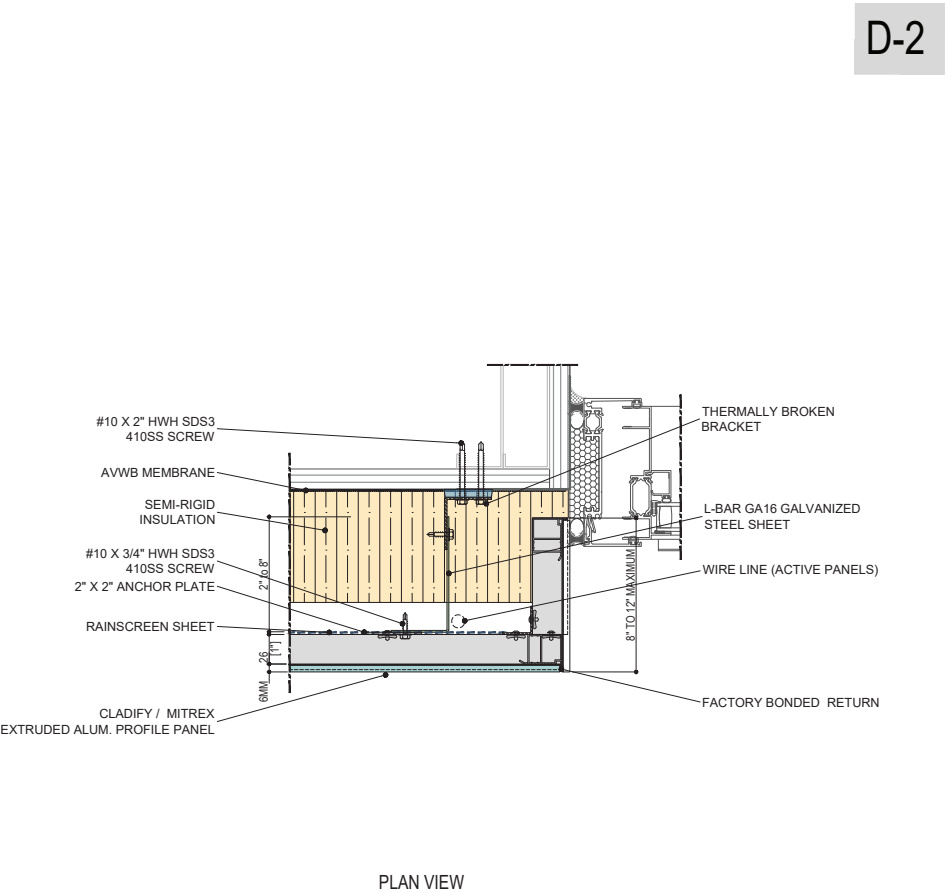
METAL FLASHING
(ANCHOR PLATE - TOP AND BOTTOM CONNECTION)

D-1

WINDOW JAMB DETAIL



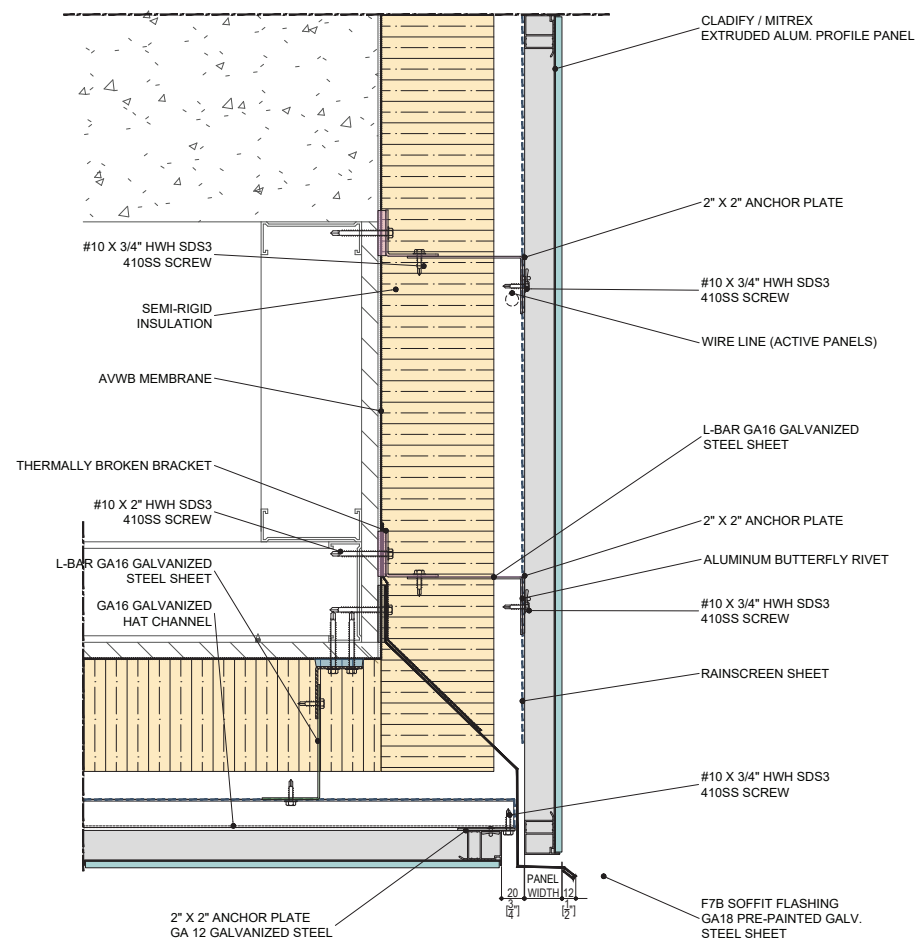
METAL FLASHING
(ANCHOR PLATE - TOP AND BOTTOM CONNECTION)



PRE-ASSEMBLED RETURN PANEL
(ANCHOR PLATE - TOP AND BOTTOM CONNECTION)

SOFFIT EDGE DETAIL

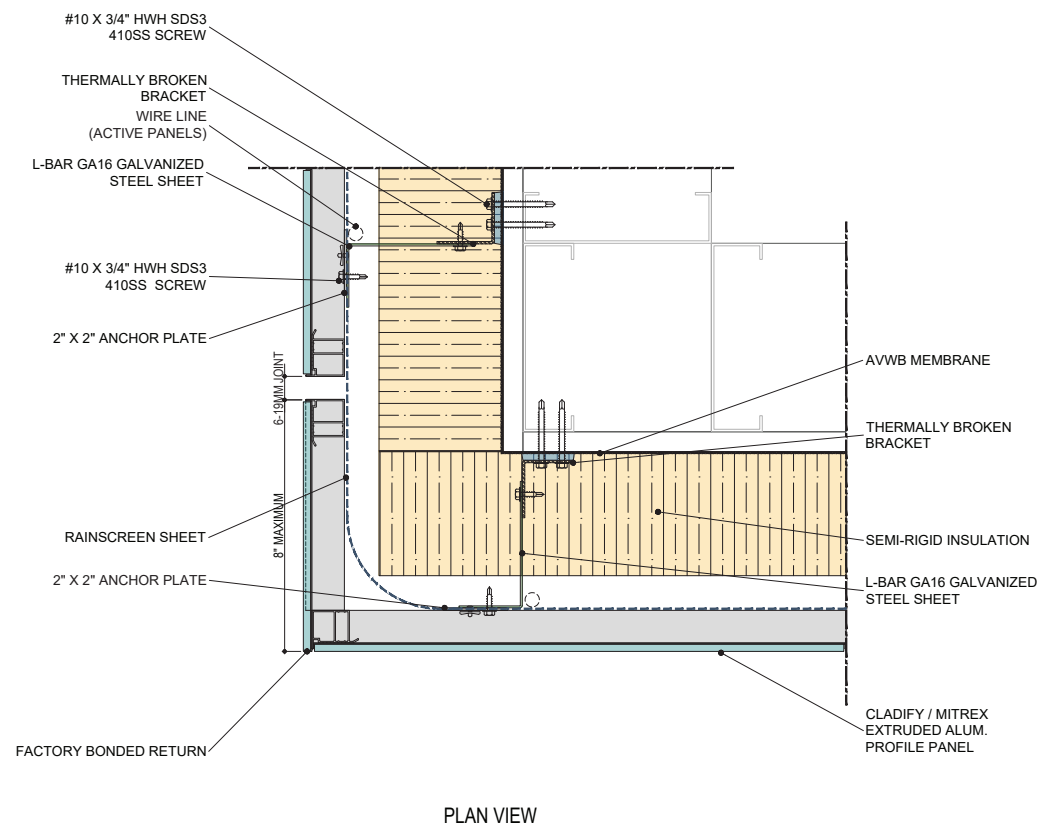
F-1



SOFFIT EDGE METAL FLASHING

CORNER DETAIL

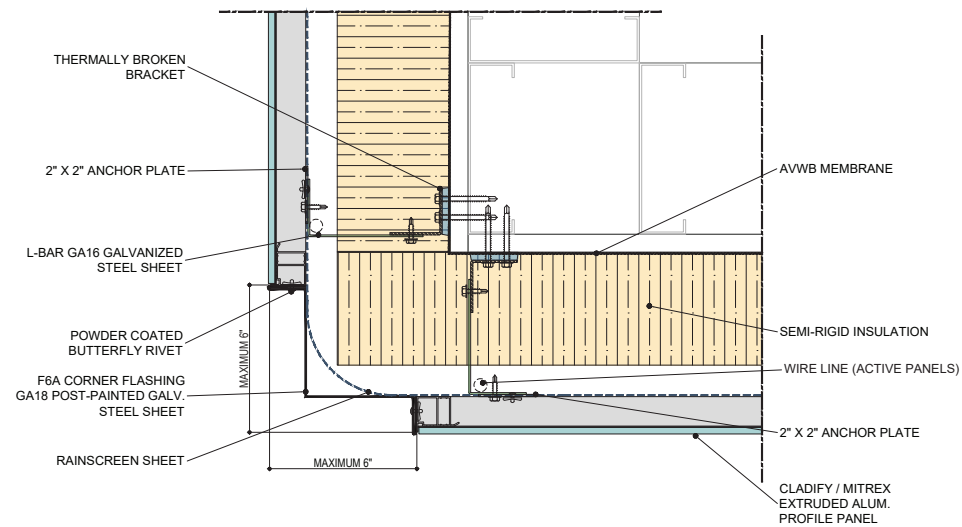
G-1



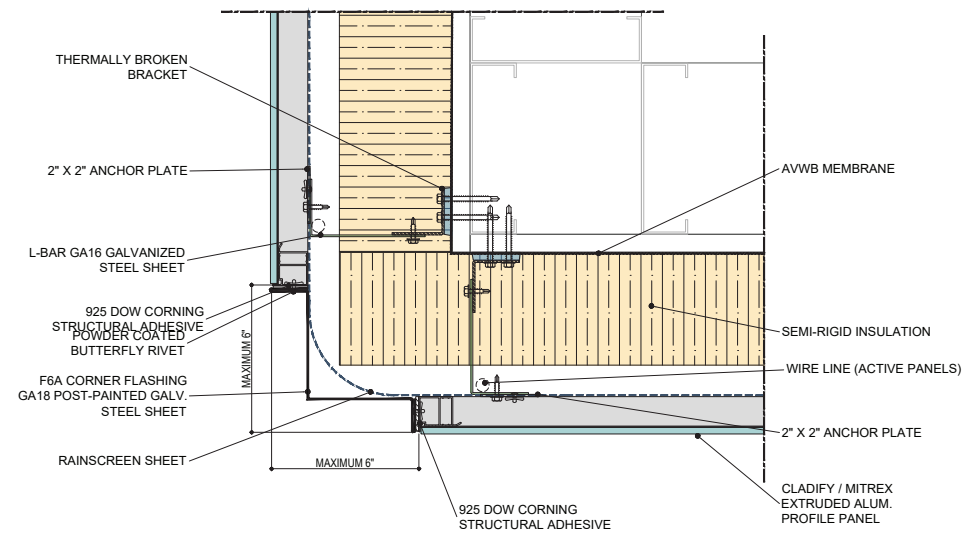
PANEL RETURN
(ANCHOR PLATE - TOP AND BOTTOM CONNECTION)

CORNER DETAIL

G-2



PLAN VIEW (OPTION 1)

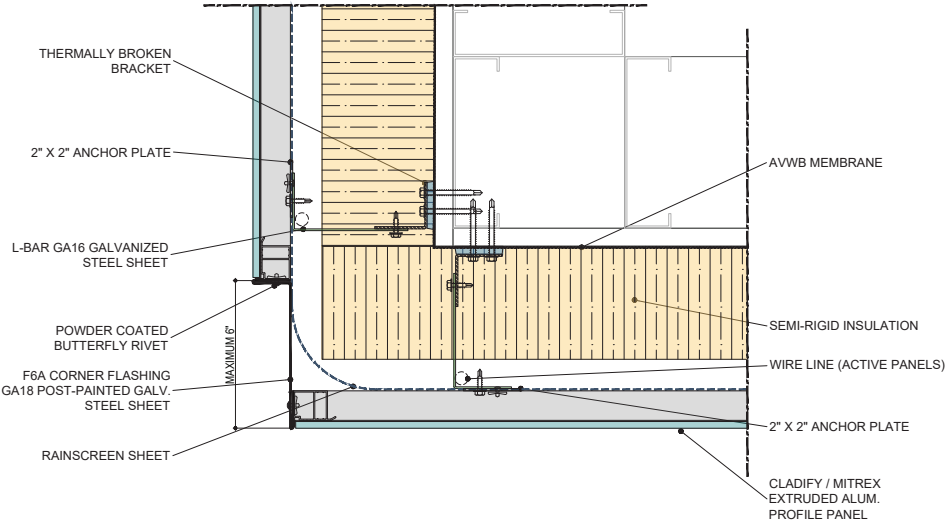


PLAN VIEW (OPTION 2)

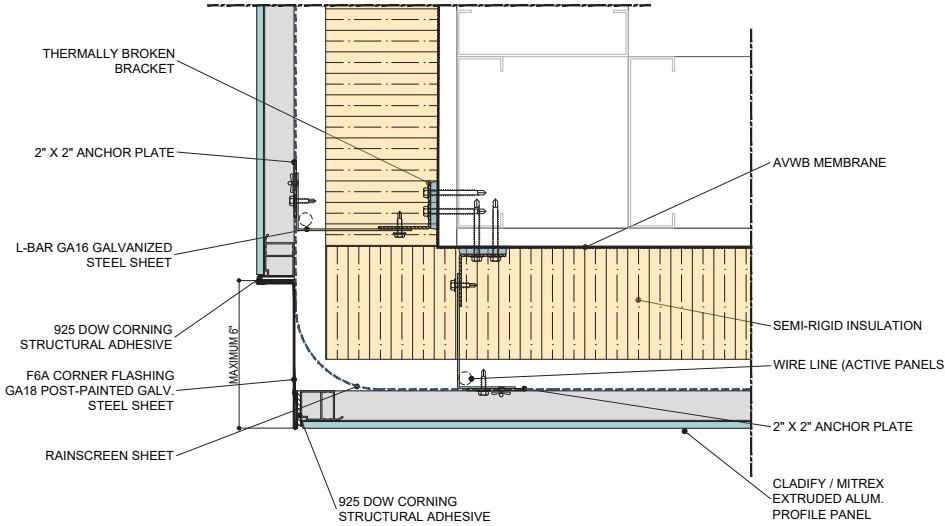
METAL FLASHING
(ANCHOR PLATE - TOP AND BOTTOM CONNECTION)

CORNER DETAIL

G-3



PLAN VIEW (OPTION 1)

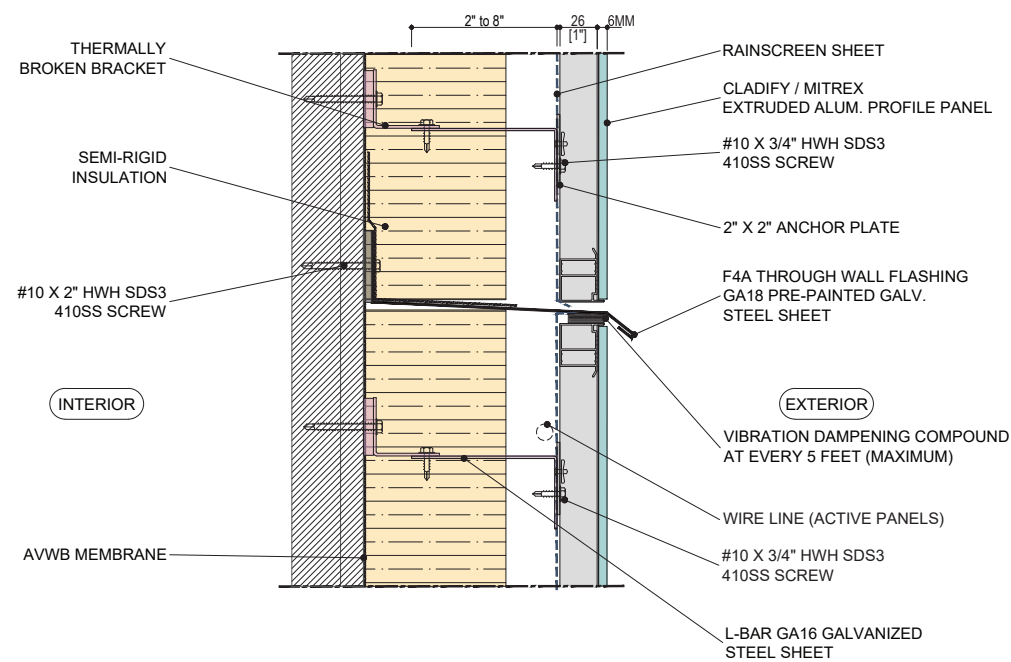


PLAN VIEW (OPTION 2)

METAL FLASHING
(ANCHOR PLATE - TOP AND BOTTOM CONNECTION)

THROUGH WALL DETAIL

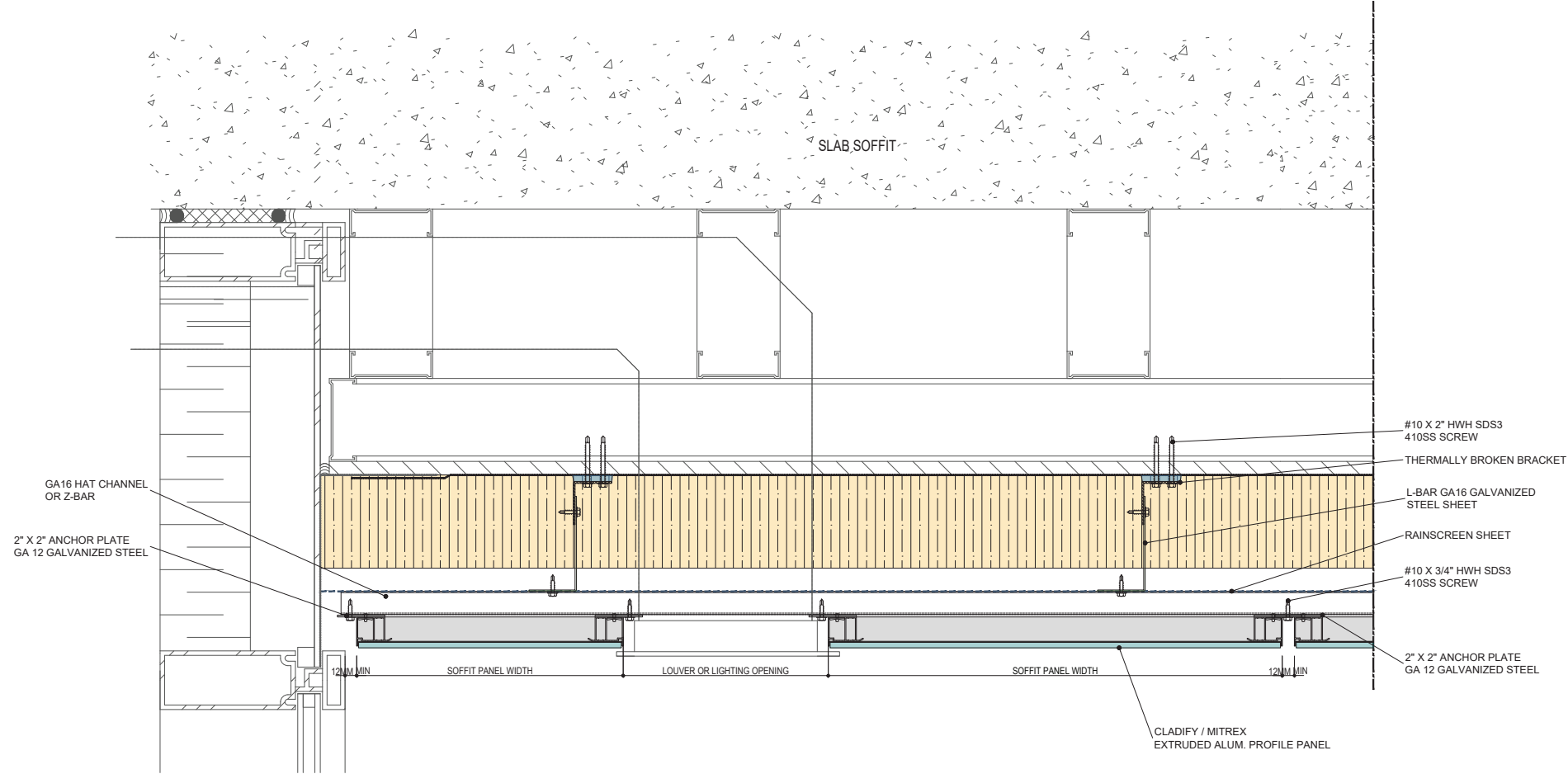
H-1



METAL FLASHING
(ANCHOR PLATE - SIDE CONNECTION)

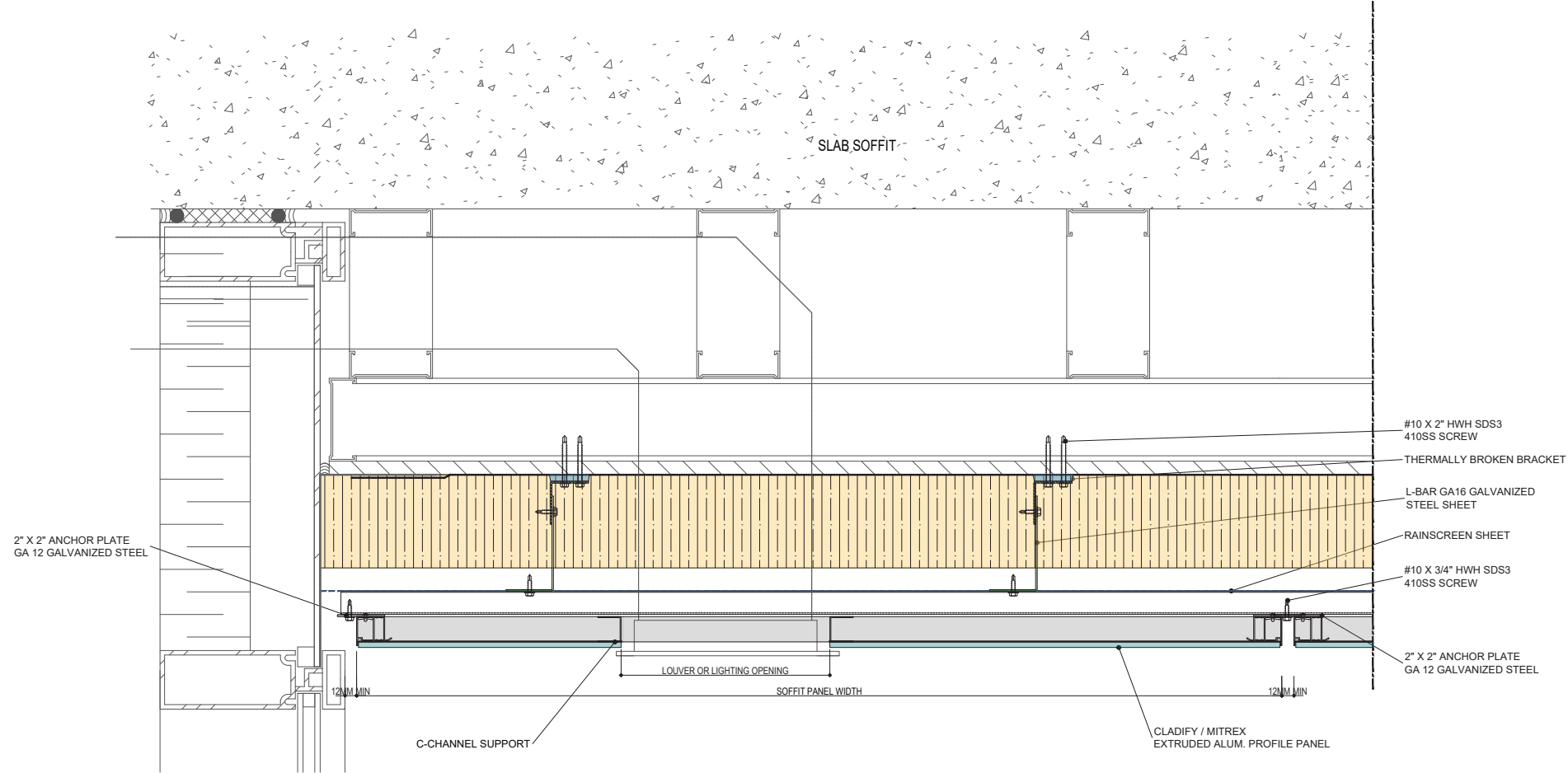
BUILDING SYSTEM INTERFACE

J-1



IN BETWEEN PANELS

BUILDING SYSTEM INTERFACE



THROUGH THE PANEL

- Toll Free

+1 (855) 254 0214

- Learn More

mitrex.com info@mitrex.com
cladify.com info@cladify.com

- Headquarters

41 Racine Rd, Toronto, ON M9W2Z4, Canada

+1 (416) 497 7120

- USA Office

Chrysler Building, 405 Lexington Avenue Floor 26, New York, USA, 10174

+1 (646) 583 4486



Mitrex and Cladify Projects

