



# Architectural Details:

Cladishield (Rainscreen) Installation  
System for eFacade LITE

## ⚡ eFacade LITE & Cladishield Rainscreen System

With CladiShield Rainscreen system, you don't just get cladding panels—you get a complete wall solution. Provided by Mitrex's sister company, Cladify, the system is a comprehensive package that includes a high-performing air and moisture barrier, continuous insulation, adjustable sub-framing systems, and, of course, our exceptional multi-facing cladding.

### 01 Rainscreen system

- An air pressure equalized cavity wall system
- Air and water tight & allows ventilation
- Continuous insulation & air vapour barrier

### 02 Improved installation

- Precise installation & irregular design capabilities
- Faster installation with pre-assembled units

### 03 Versatile assembly

- Stick built or pre-assembled capabilities
- Floor to floor panels

### 04 High-performing envelope

- Unlimited R-value
- Thermal & acoustic insulation

### 05 Code compliant

- 3rd party tested and code compliant system
- Fire testing including NFPA 285, S134, EN 13501, and more



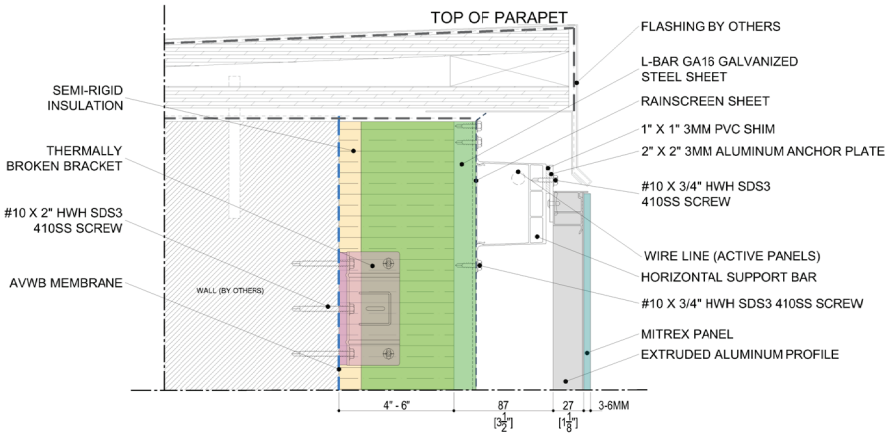
# Mitrex eFacade Products Comparison

Mitrex offers three distinct solar cladding solutions—eFacade LITE, eFacade PRO, and eFacade PRO+—each engineered to meet varying project needs in terms of design flexibility, performance, and scale.

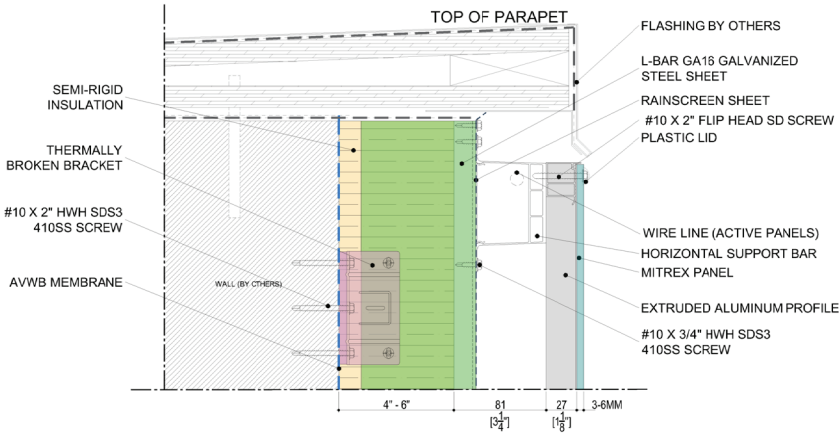
The table below provides a detailed comparison across key features such as colors and finishes, sizing options, weight, system compatibility, and testing standards. Whether you're prioritizing affordability, customization, or advanced performance, this side-by-side overview will help you identify the best fit for your project.

	eFacade LITE	eFacade PRO	eFacade PRO+
Colors & Patterns	5 color options	48 color options	Unlimited customizable colors & patterns
	Finish: Satin glass Thickness: 0.24in (6mm)	Finish: Satin glass Thickness: 0.24in (6mm)	Finish: Super satin, satin, matte, glossy, wood grain, aqualite, and more. Thickness: 0.12-0.47in (3.2-12mm)
Sizes & Weight	2 size options: 73 × 36 in (1854 × 922 mm) 73 × 18 in (1854 × 456 mm)	Custom sizes up to 80 × 39 in (2034 × 994mm).	Customizable single piece sizes up to 125 × 80 in (3175 × 2032mm). Preassembled pieces up to 420 inches (10.7m) long.
	Weight: 3.87 lb/SQFT (18.9 kg/sqm)	Weight: 3.84 lb/SQFT (18.8 kg/sqm)	Weight: 3.1 - 4.7 lb/SQFT (15.4-23.1 kg/sqm)
	Backing: Extruded aluminum profile with panel thickness of 1.3in (34mm)	Backing: Extruded aluminum profile with panel thickness of 1.3in (34mm)	Backing: Extruded aluminum profile with panel thickness of 1.3in (34mm). Aluminum honeycomb with 1 or 2 in (25 or 50mm) thickness excluding facing.
	Shapes: rectangle	Shapes: rectangle	Customizable Shapes: rectangle, triangle, circle, and more
	Ventilated rainscreen system, eFacade LITE system	Ventilated rainscreen system (interlocking channel or anchor plate)	Customizable rainscreen, unitized or prefabricated system options
Systems	System Thickness: 3.78 in (96mm)	System Thickness: 1.5 in (39mm) - 2.32 (59mm)	System Thickness: 1.42 in (36mm) - 4.33in (110mm)
	MOQ of 150 SQFT (13.9 sqm)	MOQ of 500 SQFT (46.4 sqm)	MOQ of 5,000 SQFT (464.5 sqm)
	3rd party tested	3rd party tested	3rd party tested
Testing	Code-compliant & safety tested	Code-compliant & safety tested	Code-compliant & safety tested
	Fire tested	Fire tested	Fire tested

PANEL HEAD DETAIL

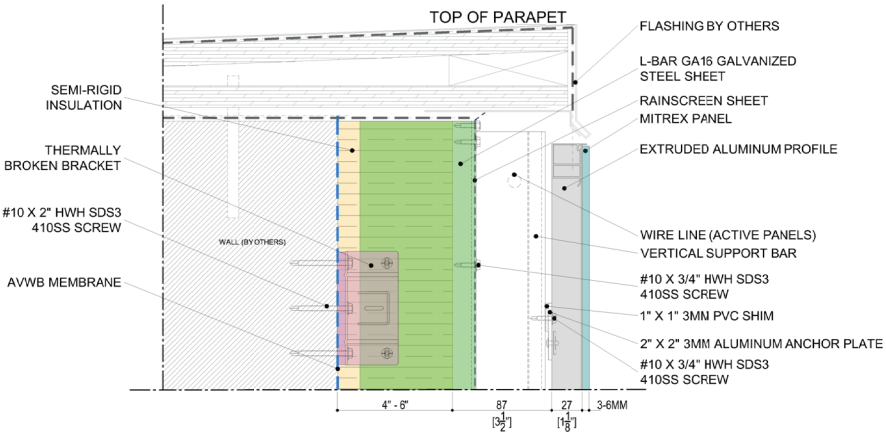


ANCHOR PLATE  
HORIZONTAL SUPPORT & POWER BAR

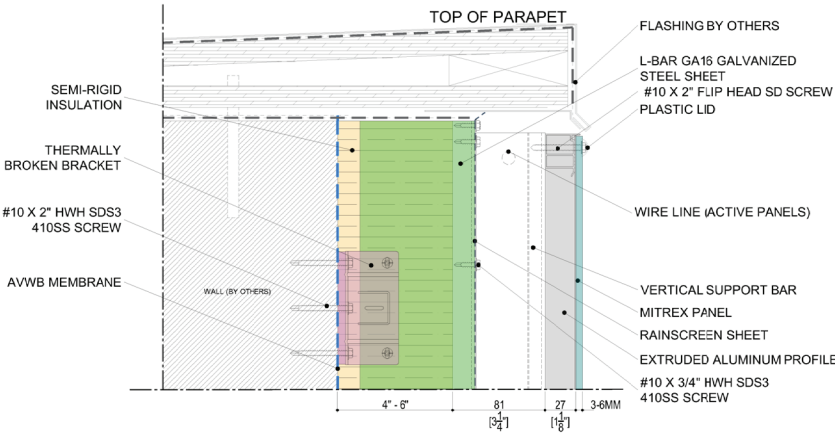


FACE FASTENED  
HORIZONTAL SUPPORT & POWER BAR

PANEL HEAD DETAIL



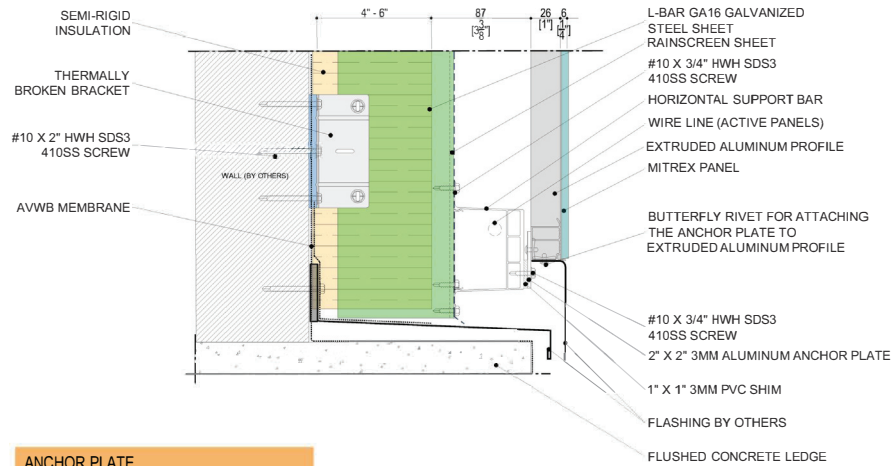
ANCHOR PLATE  
VERTICAL SUPPORT & POWER BAR



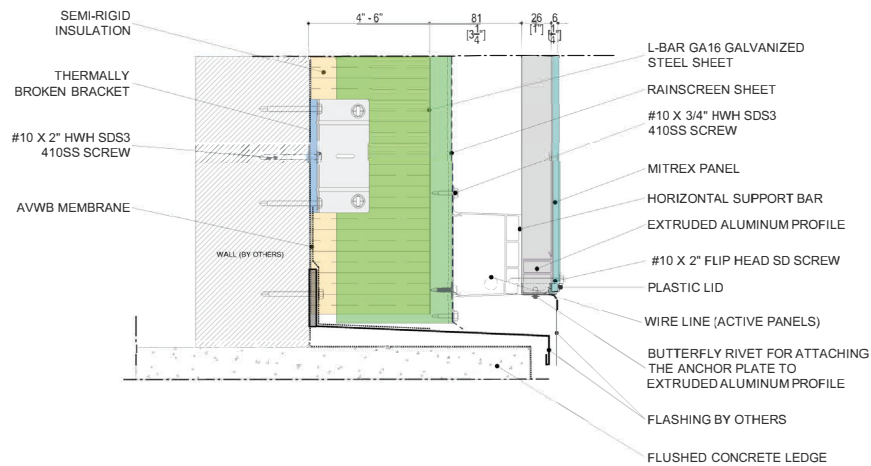
FACE FASTENED  
VERTICAL SUPPORT & POWER BAR



## PANEL BASE DETAIL

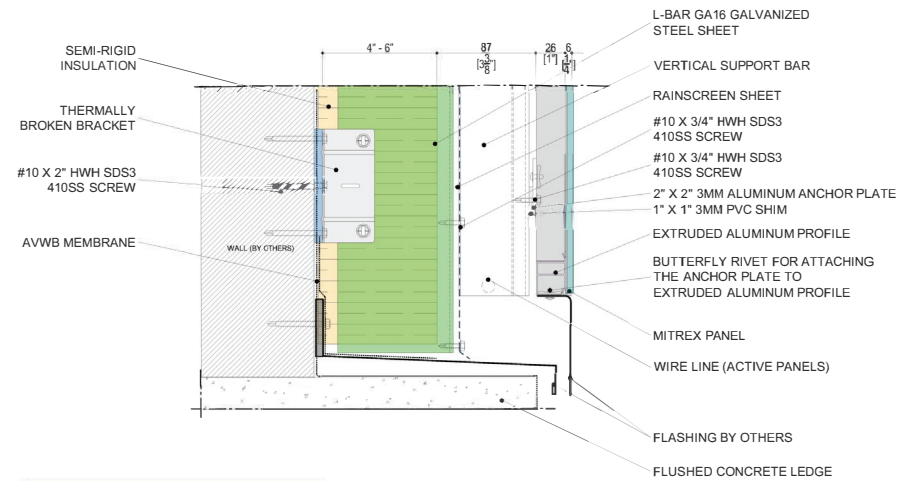


ANCHOR PLATE  
HORIZONTAL SUPPORT & POWER BAR

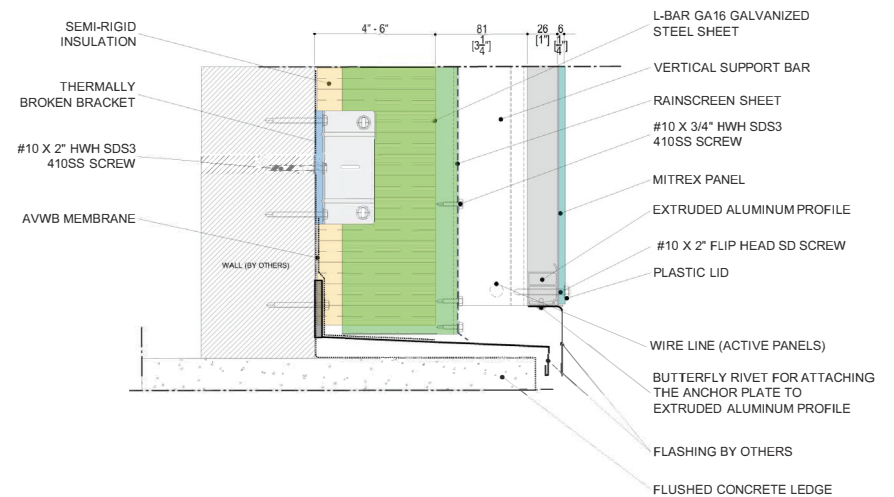


FACE FASTENED  
HORIZONTAL SUPPORT & POWER BAR

## PANEL BASE DETAIL



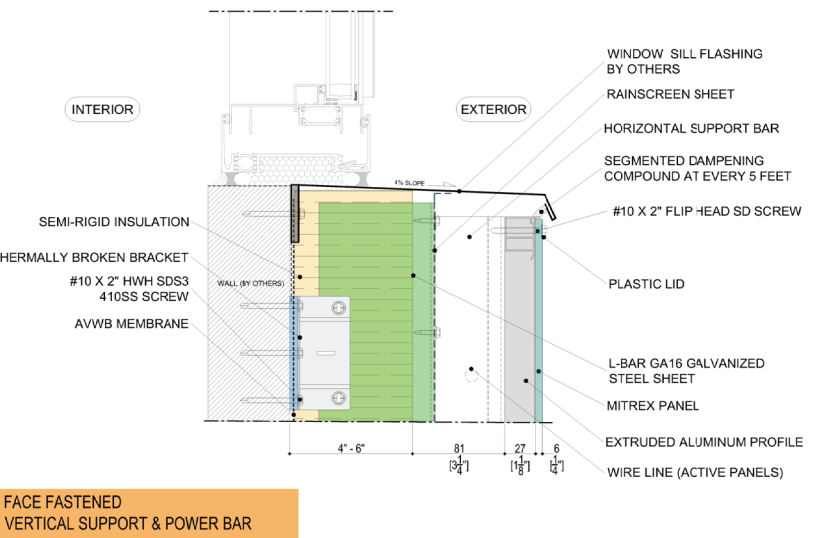
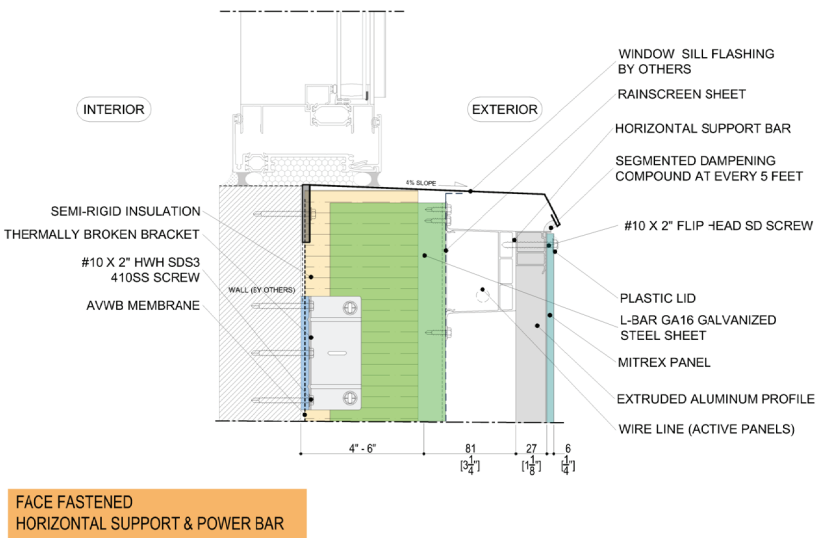
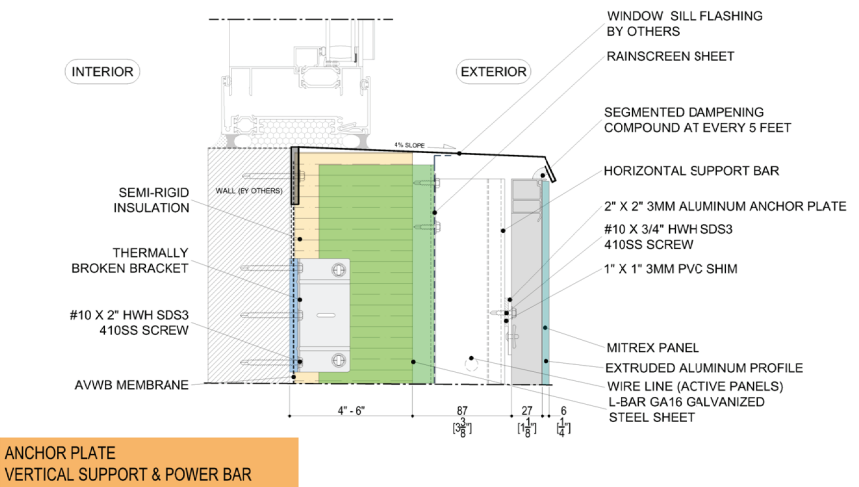
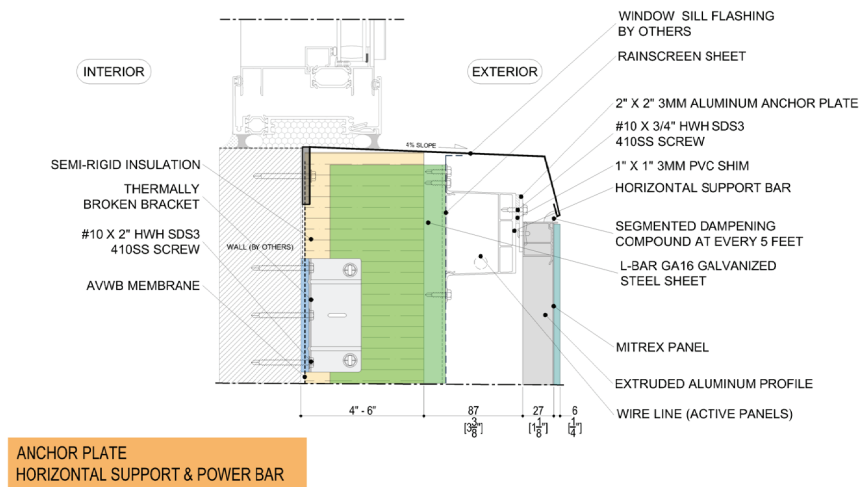
ANCHOR PLATE  
VERTICAL SUPPORT & POWER BAR



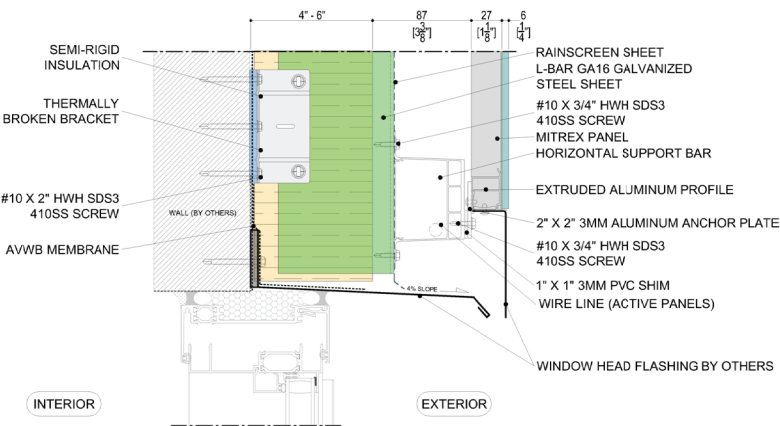
FACE FASTENED  
VERTICAL SUPPORT & POWER BAR

WINDOW SILL DETAIL

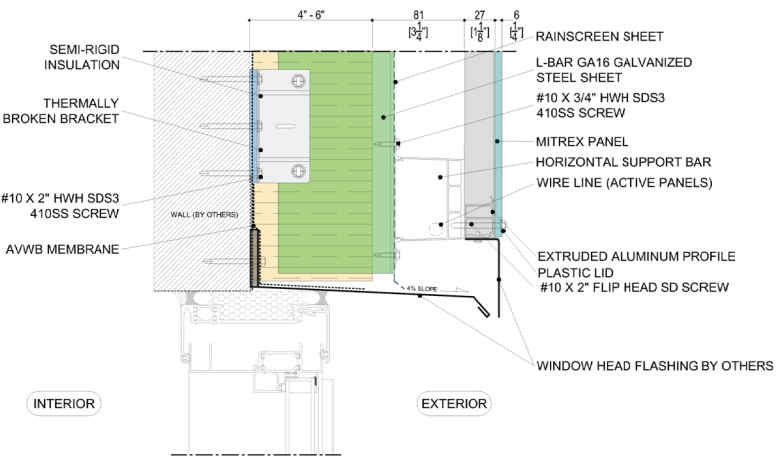
WINDOW SILL DETAIL



WINDOW HEADER DETAIL

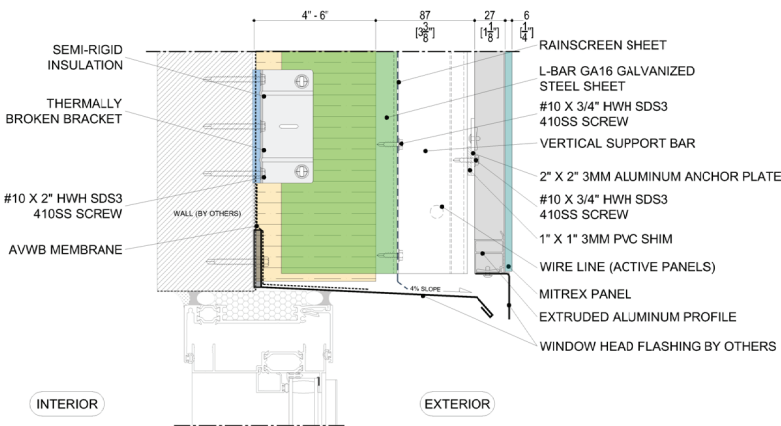


ANCHOR PLATE  
HORIZONTAL SUPPORT & POWER BAR

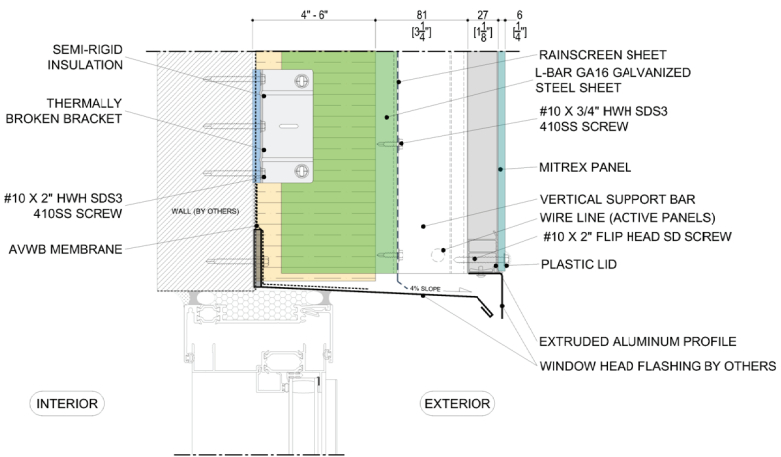


FACE FASTENED  
HORIZONTAL SUPPORT & POWER BAR

WINDOW HEADER DETAIL



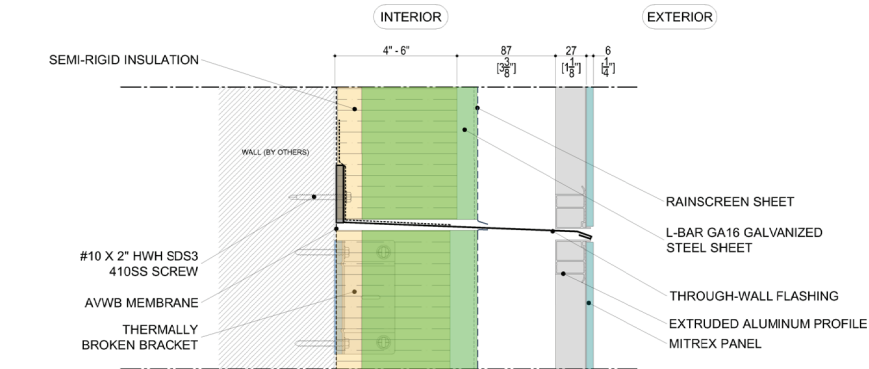
ANCHOR PLATE  
VERTICAL SUPPORT & POWER BAR



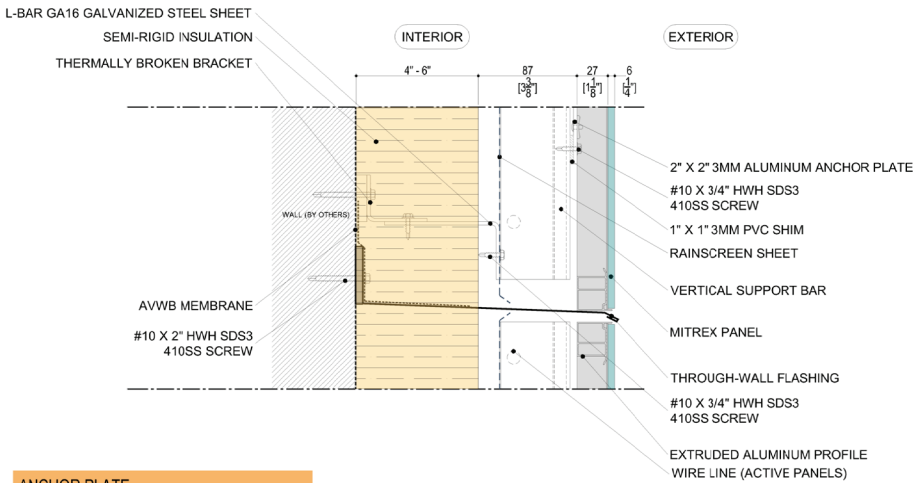
FACE FASTENED  
VERTICAL SUPPORT & POWER BAR

SYSTEM SECTION DETAIL

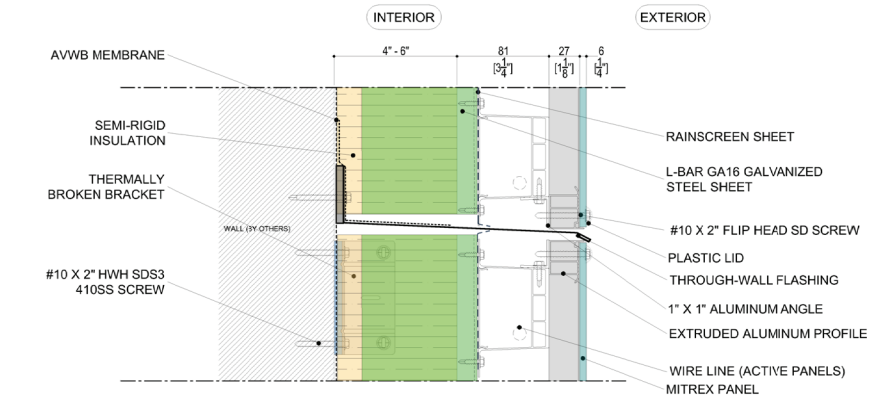
SYSTEM SECTION DETAIL



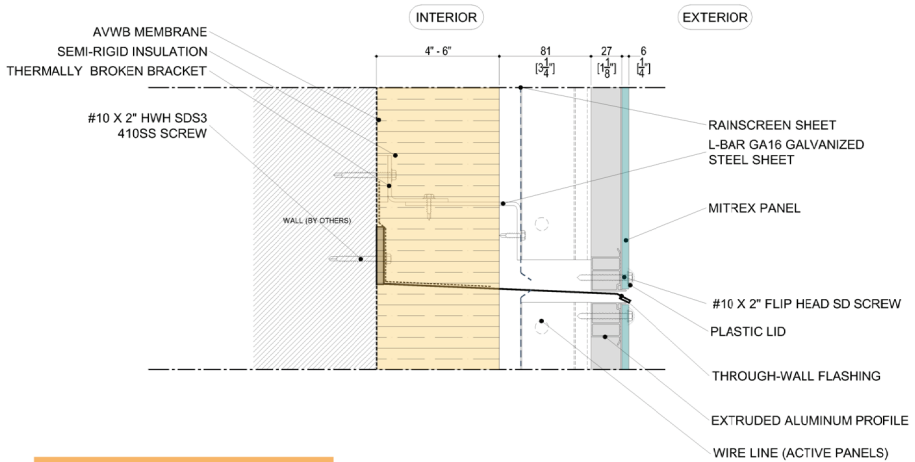
ANCHOR PLATE  
HORIZONTAL SUPPORT & POWER BAR



ANCHOR PLATE  
VERTICAL SUPPORT & POWER BAR



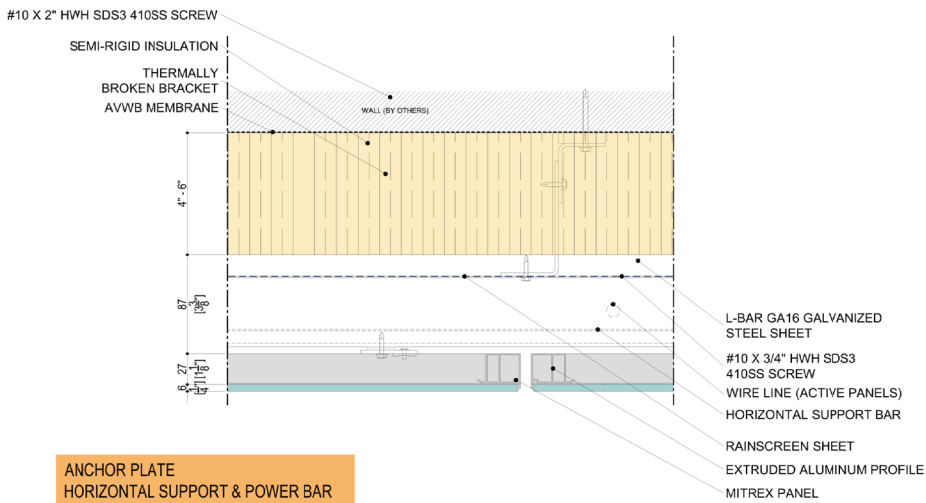
FACE FASTENED  
HORIZONTAL SUPPORT & POWER BAR



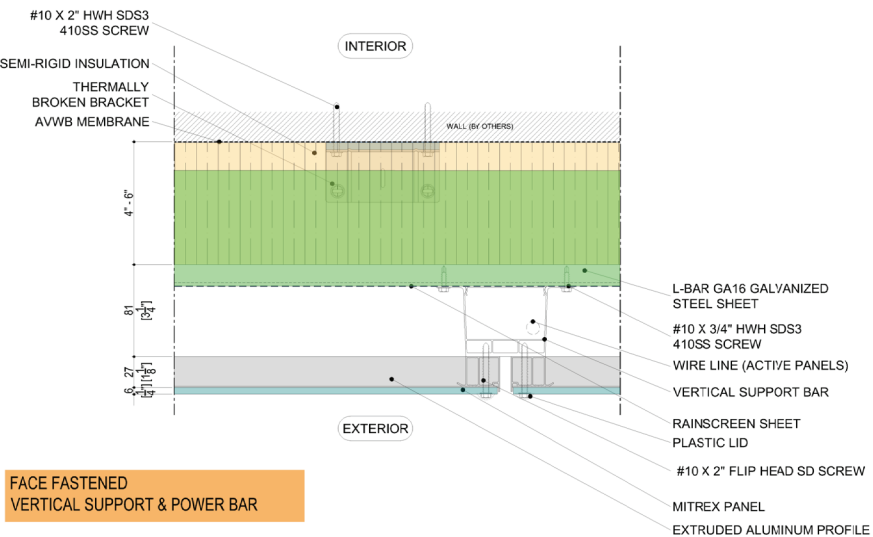
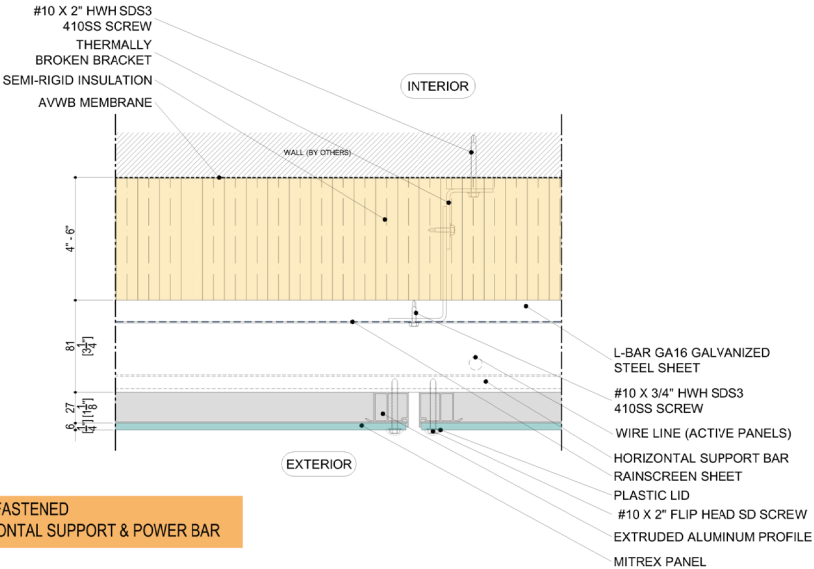
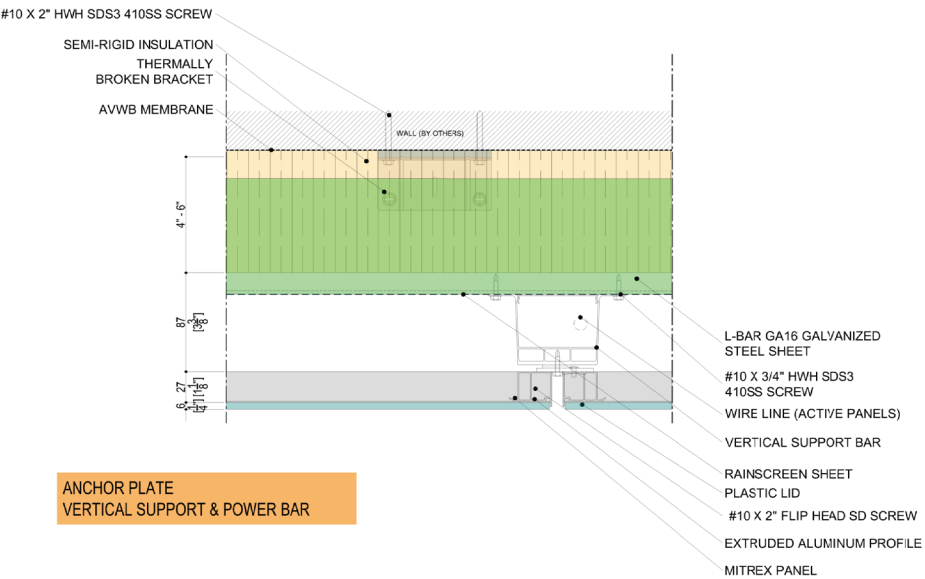
FACE FASTENED  
VERTICAL SUPPORT & POWER BAR



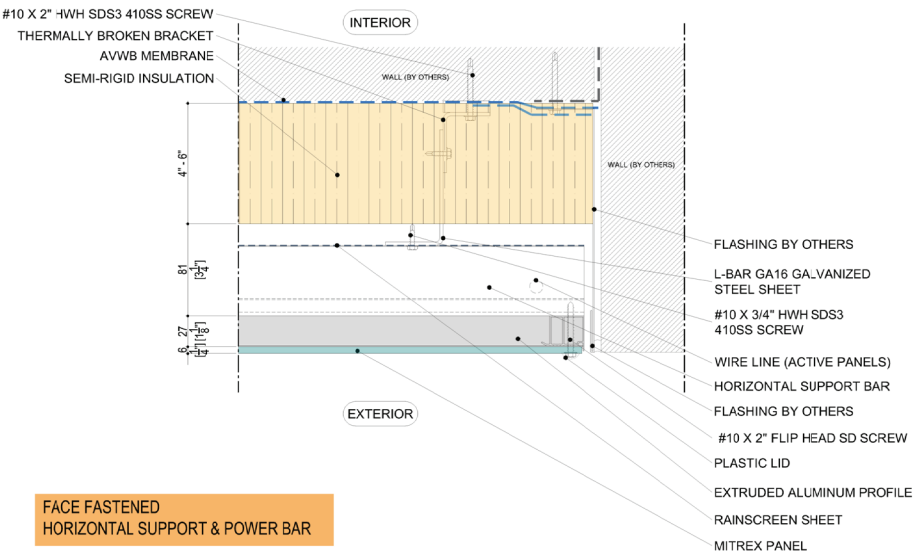
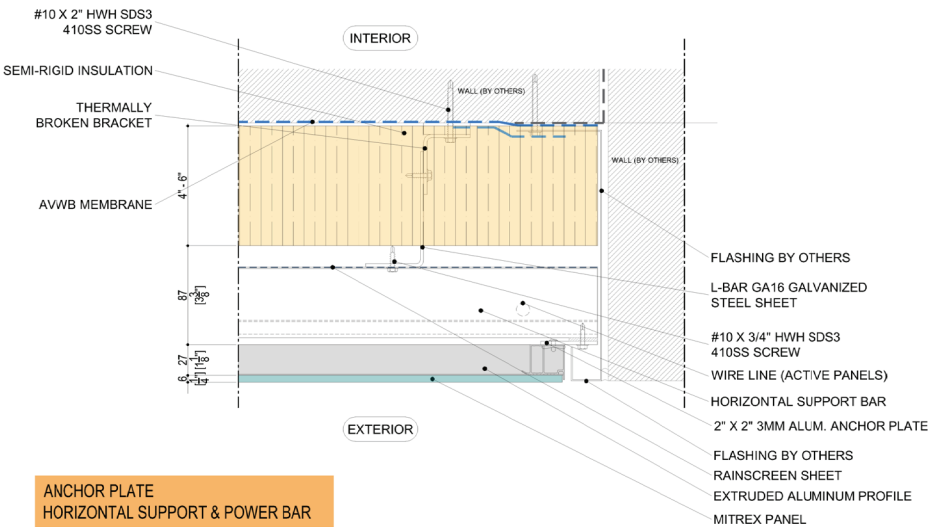
SYSTEM PLAN DETAIL



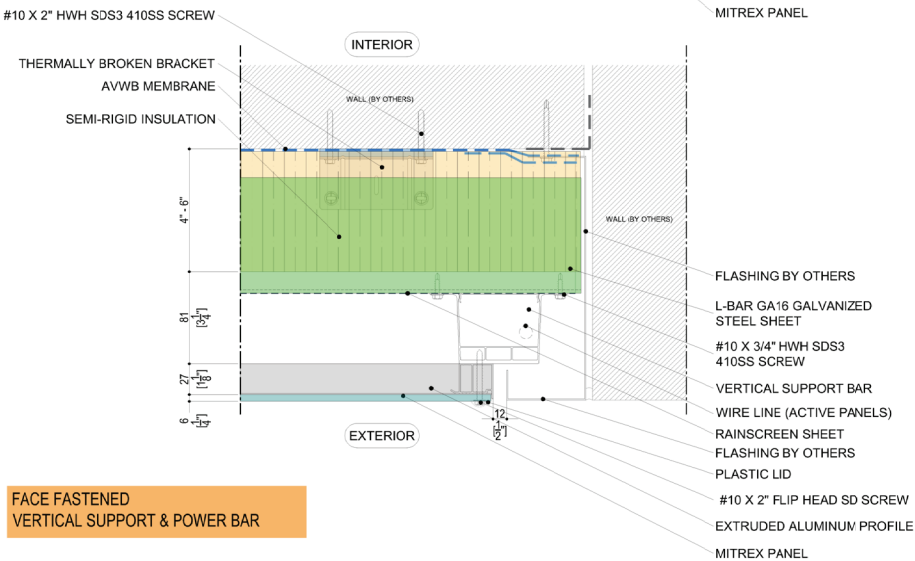
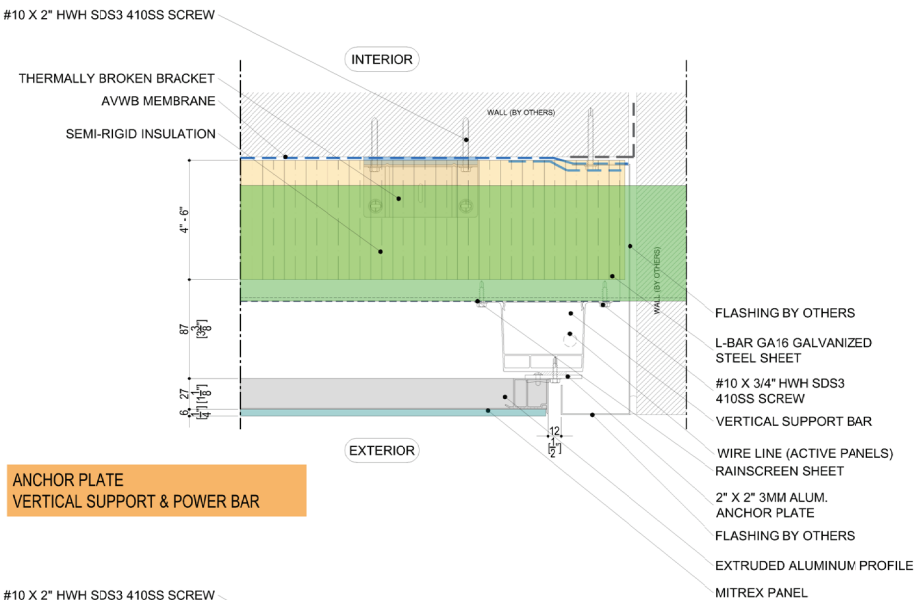
SYSTEM PLAN DETAIL



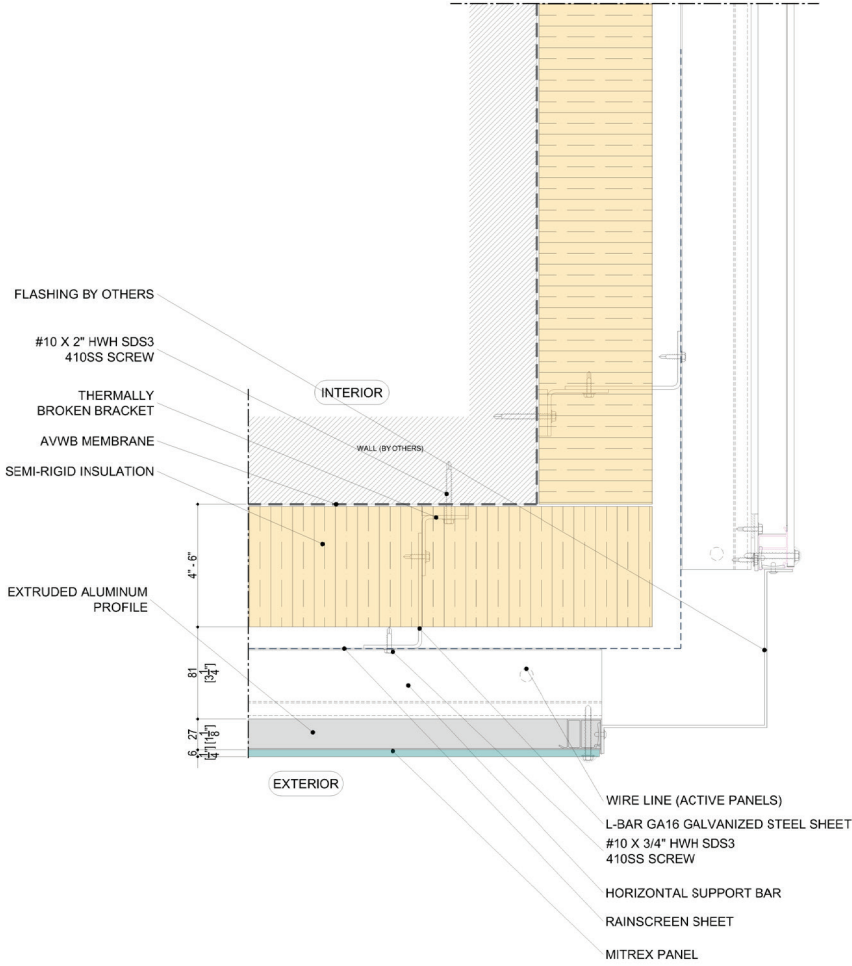
JAMB DETAIL



JAMB DETAIL

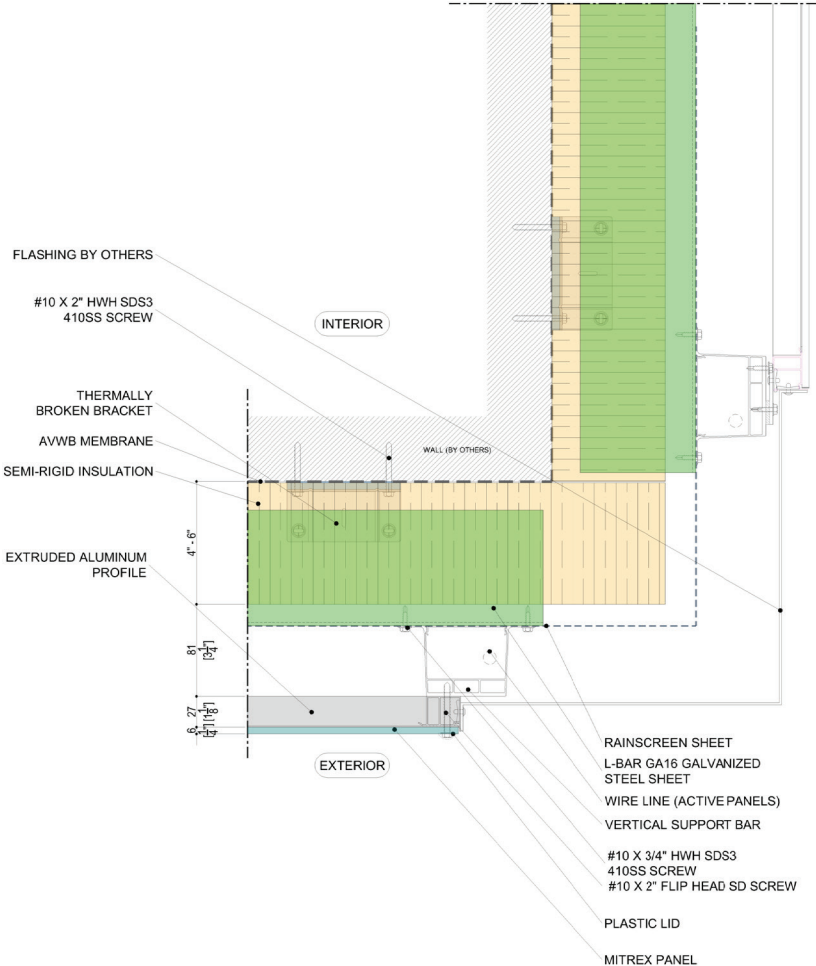


CORNER DETAIL



FACE FASTENED  
HORIZONTAL SUPPORT & POWER BAR

CORNER DETAIL



FACE FASTENED  
VERTICAL SUPPORT & POWER BAR

- Toll Free

+1 (855) 254 0214

- Learn More

[mitrex.com](http://mitrex.com)    [info@mitrex.com](mailto:info@mitrex.com)

- Headquarters

41 Racine Rd, Toronto, ON M9W2Z4, Canada

+1 (416) 497 7120

- USA Office

Chrysler Building, 405 Lexington Avenue Floor 26, New York, USA, 10174

+1 (646) 583 4486



Mitrex and Cladify Projects

